

# NGM

B L O C K S



*"It's not what we do occasionally that shapes our lives. It's what we do consistently."*  
- Anthony Robbins

## CONTENTS

What we do .....	01
Product Portfolio .....	05
Distribution channel and deliveries .....	08
Packaging .....	09
Machineries .....	10
Applying and Contracting .....	11
Our Teams and Health & Safety .....	12
Ethical Trading .....	13
Our Clientele .....	14
Global Vision and Sustainability .....	15
Responsible Sourcing .....	16
Corporate Social Responsibility .....	16
Community Engagement .....	17
Safety, Health & Environment .....	17
Environmental responsibility .....	18
Declaration of Performance .....	18
Research and Development .....	19
Contacts and Multimedia .....	20

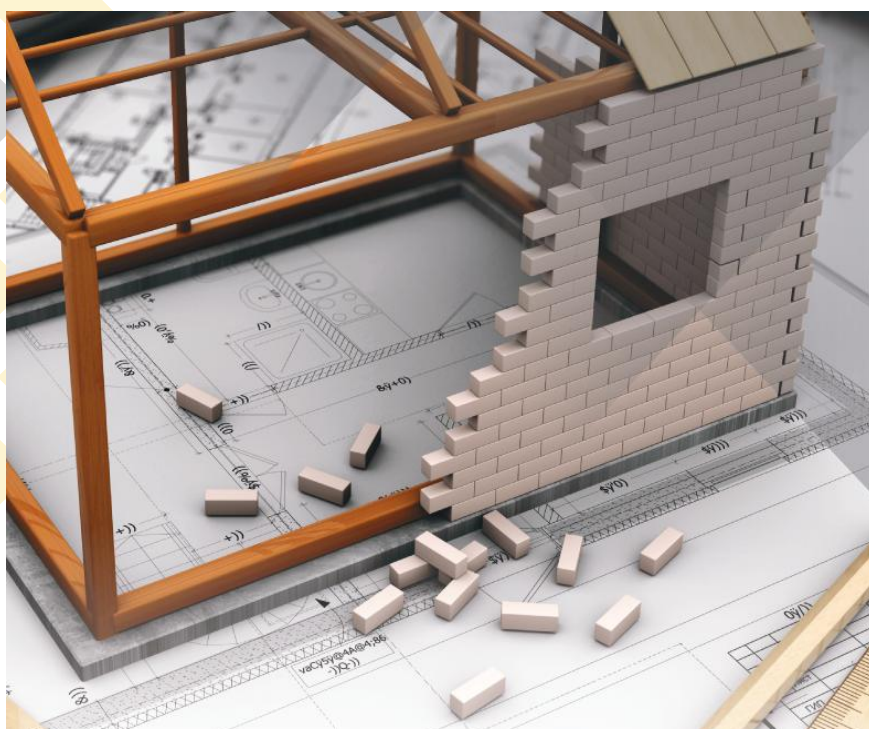
NGM Blocks is a fully automated concrete block manufacturing plant for the production, delivery and application of all kinds of Cement Material Units, such as roofing hourdies (for ceilings), hollow blocks, semi & solid blocks (for walls) and thermally insulated blocks (with foam or EPS for reducing the buildings running cost from heating & cooling).

NGM Blocks also produces and applies various concrete paving and interlocking products for gardens, landscaping, driveways and patios, as well as water channels, gutters, planters, and kerbstones structures.

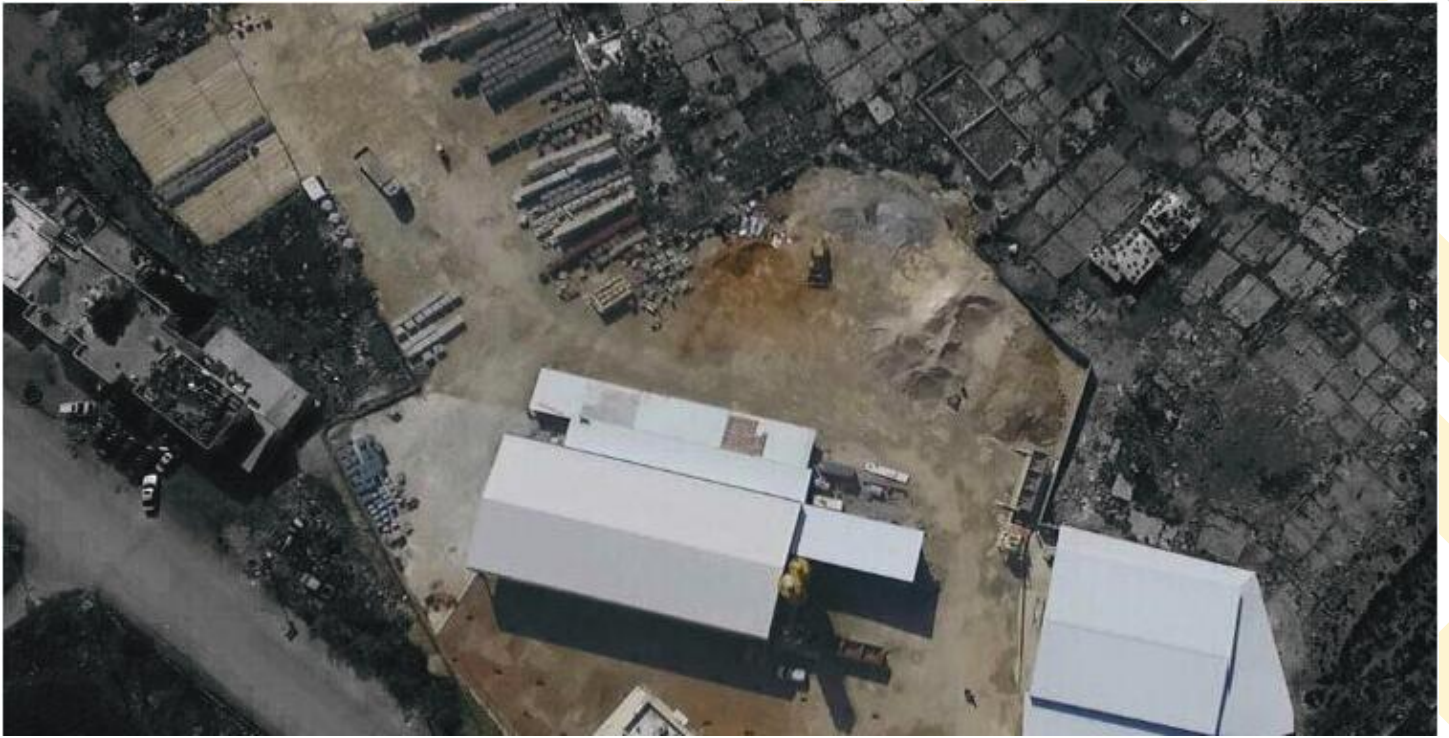
NGM Blocks sells and deliver complementary items as well such as gravel aggregates and sand, in addition to cement bags.

Whether it be for private homes, commercial or governmental projects, NGM Blocks will guarantee full and comprehensive technical support, as well as a smooth delivery of material and services.

NGM Blocks head office and factory are based in the industrial area of Anfeh, Sea Side Road, Koura, in the North of Lebanon







The factory is located on a 20,000 sqm of land.





# Factory Layout

The below production lines each are largely dedicated to a separate product category, this is to enhance operational efficiency.

## Product Lines

1 *Hallow Blocks & Hourdles*

2 *Paving & Hallow Blocks*

3 *Foam Insulated Blocks*

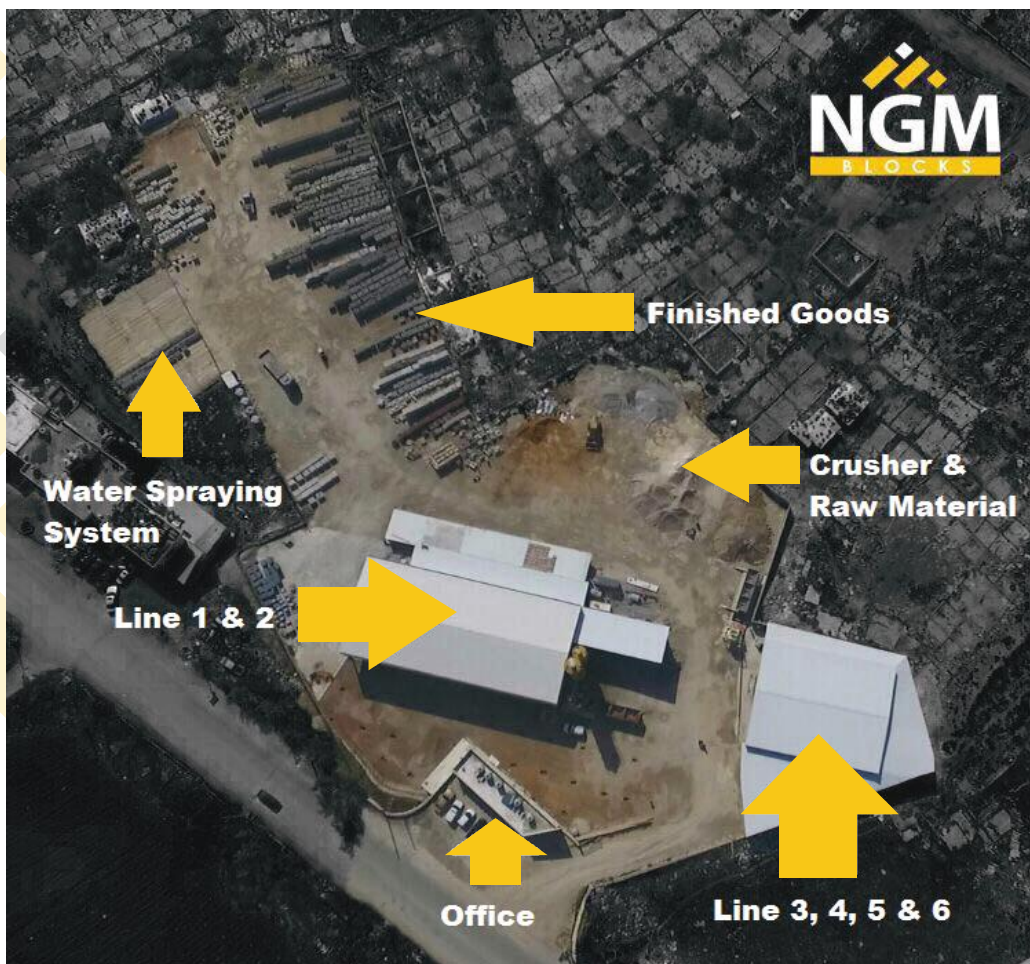
4 *Water Channels, Gutters & Kerbstones (bordure)*

5 *Pedestrian concrete Tiles  
Wheel Stappers & Tree Planters*

6 *Lintels*

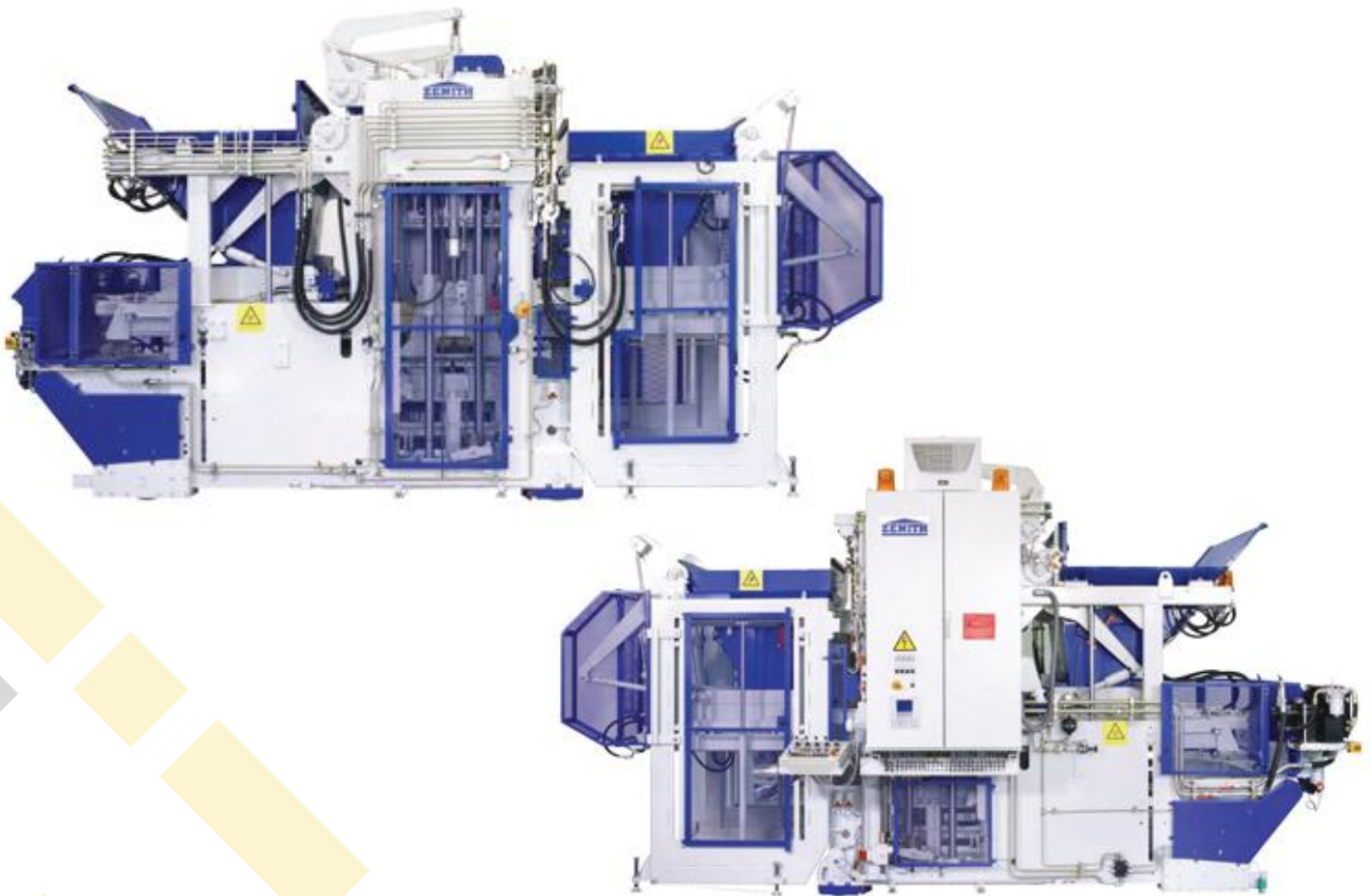
**Automated  
Lines**

**Liquid  
Manual  
Lines**

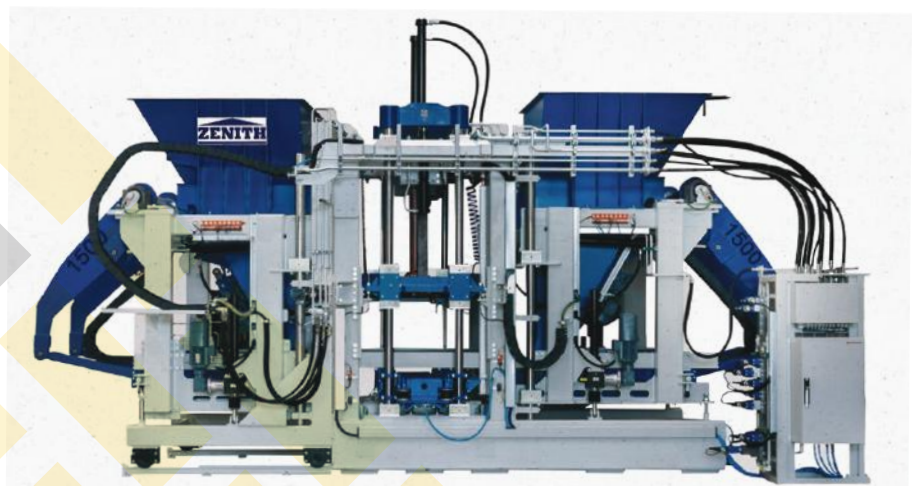


# Automated Line

The first automated line (capacity of 5,000 units per day) is exclusively used to produce solid blocks (for pavement and roads);



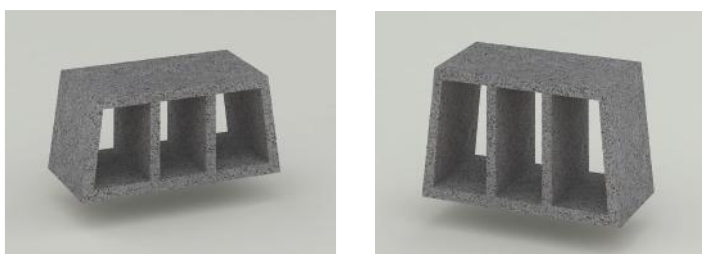
The second automated line (capacity of 18,000 units per day) which was added is used for both, paving blocks as well as hollow blocks .



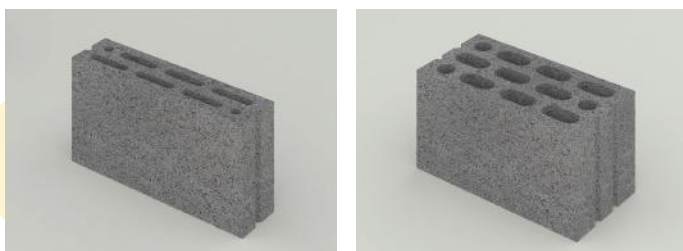
## NGM has three primary product lines:

The First primary product line contains all Concrete Masonry Units CMU: this includes Roofing Hourdie (for ceilings) and Hollow and Solid Blocks (for walls), in addition to Thermally Insulated Blocks (with Foam for exterior walls).

### *Roofing Hourdie (for ceilings)*



### *Hollow Blocks Lebanese Standards*



### *Hollow Blocks International Standards*



### *Semi-Solid Blocks*



### *Solid Blocks*



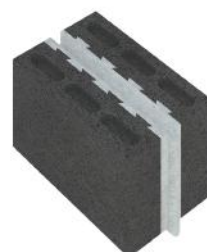
### *Thermally Insulated Blocks*



### *Thermally Insulated Semi-Solid Blocks*



### *Thermally Insulated Solid Blocks*





## NGM second primary product line:

Outdoor Items: this includes Concrete Paving Blocks (for pavement and roads), in addition to Water Channels, Gutters, Kerbstones (bordure), Wheel Stoppers and concrete Tree Planters.

### Concrete Paving and Interlock (6 cm thickness)



### Mosaic Paving (8 cm thickness)



### Industrial Paving (10 cm thickness)



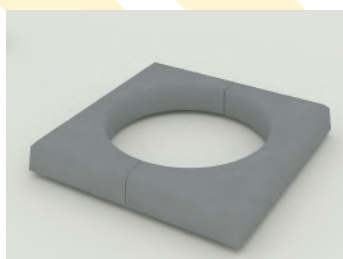
### Water Channel



### Depressed & Transition Curb Channel



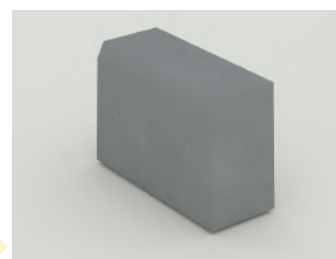
### Tree Planters



### Wheel Stoppers



### Original, Half Battered & Typical Edge Kerbs





NGM third primary product lines contains complementary products such as cement bags and all other construction raw materials including gravel (powder, sand and crushed stones) and all types of aggregates.

## Cement Bags



## Construction Raw Materials



All types of aggregates

NGM Blocks have been involved in its distribution channel since it started, this has served its industry and businesses. Products are available for collection from site or may be delivered to any site by our dedicated hauliers.

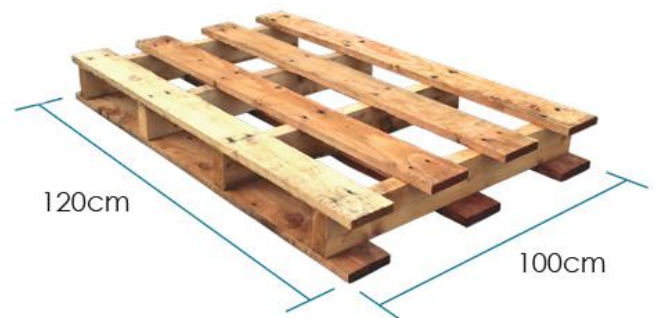
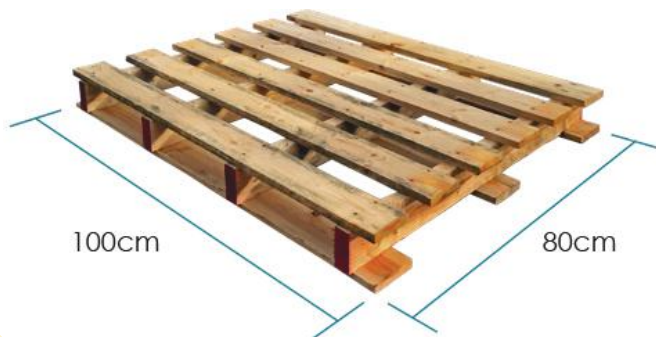
NGM Blocks provides high quality road haulage transport with cranes for handling and laying services. Our extensive fleet of trucks and trailers cater only for our business. We boast a fleet of trucks with satellite tracking information, so we know exactly where our shipment is at any moment.





All extra packaging, we bring into the site is just future garbage. The more we can avoid extra packaging, the less waste we make.

Most our products are ex-stocked on wood pallets, and those pallets are returnable and refundable. Usually NGM Blocks wood pallets dimensions are 1 meter long and 80 cm in width or 120 cm in length and 1 meter in width.



Certain products are made to order and typically require notice prior to collection. Our products are generally banded with polyester bands, but these should not be relied on for load security.





All NGM Blocks machinery are serviced with outsourced specialised mechanical and electrical companies, in addition to NGM trained technicians that are committed to fast, cost-effective practices for our mechanical setbacks, including preventive maintenance and machine repair.

We have the capabilities to keep our fixed or mobile machinery ready and maintained.



NGM Blocks has come a long way since its first contract over three years ago, our management system plays a key role in achieving and accomplishing projects on time, to the highest standard of quality, and within the given budget.

**The indoor** - Best Cement Material Unit (CMU) workforce has been chosen to become NGM Blocks Approved Installers, they have been accredited by NGM to install hard walls to approved Lebanese and international Standard.

Their workmanship is regularly assessed by us to provide you with the confidence of knowing that these block-layering and plastering workers will deliver your home and buildings with outstanding finishing.



**The outdoor** - Also, best interlock brick layers and landscaping contractors have been approved to install hard commercial and governmental landscaping.

Moreover, they consistently demonstrate a prominent level of service and proficiency which enables them to provide you with the best quality available.

NGM Blocks has built a dynamic workforce of qualified teams which constitute the major asset in skilfully executing all your projects.



## Our Teams

Having a great idea isn't enough to build a great company, what it really takes is teams of talented people, organized in ways that truly let them shine.

**Overtime, NGM Blocks has built its teams successfully and efficiently;**

- ◆ 15 well qualified personnel are to run our office smoothly
- ◆ 40 skilled workers are there for the factory and production
- ◆ We are proud of 150+ well trained workforce that are operating in our projects we have contracted.



## Health & Safety

We have a responsibility to each one of our employees to create a safe and healthy environment in which to work. We rely on our people to build the relationships that sustain our business and consequently we have set ourselves the target of all NGM Blocks workplaces to be free from injuries and occupational ill health.

Every year we aim to come closer to this target by developing specific business improvement plans, ensuring all our people understand our health and safety policies and put them into practice every day.



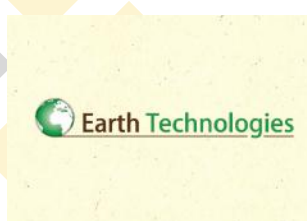
We actively monitor all our teams with a view to ensure that we are aware of and working towards applying the International Base Code to employees and workers.

Within our chains of workers, we pay attention to those areas we consider presenting the highest risk of non-conformity with this Base Code.

**These Guidelines require sites to ensure that:**

- ◆ Child labor is not used
- ◆ There is no forced and bonded labour
- ◆ Ethical recruitment practices are used
- ◆ The health and safety of workers is protected
- ◆ Employment contracts are provided to all workers
- ◆ Wages meet minimum requirements or national norms as a minimum
- ◆ Working hours meet legal requirements and are not excessive
- ◆ The company respects diversity within its workforce
- ◆ Harassment and abuse are not tolerated
- ◆ There is clear and readily accessible access to remedy
- ◆ Accommodation is safe and hygienic
- ◆ Freedom of association and the right to collective bargaining is respected

Listed below, is a group of our reputable clients who contracted us within fulfilling their needs and continue to entrust us with their business.





## Global Vision

NGM Blocks will lead the way to the future of precast concrete, enriching lives with the safest and most responsible ways of building, masonry and landscaping material. Through our commitment to quality, constant innovation and respect for the planet, we aim to exceed expectations and be rewarded with a smile. We will meet challenging goals by engaging the talent and passion of people, who believe there is always a better way.



## Sustainability

At NGM Blocks, we are serious about our business and serious about our responsibilities. We believe that risk minimization, legal compliance, responsible sourcing and purchasing, together with the continuous improvement of our products and operating methods are fundamental to the way we do business.

Each NGM Blocks business establishes, monitors and reviews a range of specific targets reflecting the measures against each policy that is appropriate to their business, for inclusion in their business improvement plan, these are reported annually.





## Responsible Sourcing

NGM Blocks has a long and proud history of environmental and social responsibility initiatives in Lebanon and within our global supply chains – this is reflected in our ‘built on relationships’ strapline.

Key examples of this commitment were being one of the first in the landscaping industry to obtain independent certification for ISO 9001:2015. 

Our work has also gained numerous business awards over the years for example for the restoration of our Lebanese quarries, some of which have attained ‘site of special scientific interest’ status thereby preserving amenity for generations to come.



## Corporate Social Responsibility

NGM Blocks aim to be good neighbours and do everything reasonably possible to build strong, long-lasting relationships with local communities - especially in the areas where we operate.

We do this by maintaining our sites in a way that protects the community from any hazards or dangers resulting from our business and treating all the people, communities and businesses that in any way affected by our activities with respect.



## Community Engagement

We are passionate about the design and creation of enjoyable and accessible environments in the local community, and at home. We believe this will bring people together to build and protect our most valuable national resource, the indoor and the outdoors.

NGM Blocks aim to help support individuals and communities who want to renovate public outdoor spaces. We have helped many admirable schemes in the past and look forward to working with and supporting future developments.

We at NGM Blocks are proud of our work with renovating valuable outdoor space within the local and wider community, we feel privileged to give something back and make a difference to the environment for future generations to enjoy.



## Safety, Health & Environment

We are sincere about these issues and serious about our responsibilities. All our people are trained to understand our policies and to put them into practice every day. Our management continually reviews and updates the way we care for our environment and our people.



## Environmental Responsibility

We are passionate about the design and creation of enjoyable and accessible environments in the local community, and at home. We believe this will bring people together to build and protect our most valuable national resource, the indoor and the outdoors.

NGM Blocks aim to help support individuals and communities who want to renovate public outdoor spaces. We have helped many admirable schemes in the past and look forward to working with and supporting future developments.

We at NGM Blocks are proud of our work with renovating valuable outdoor space within the local and wider community, we feel privileged to give something back and make a difference to the environment for future generations to enjoy.



## Declaration of Performance

We are sincere about these issues and serious about our responsibilities. All our people are trained to understand our policies and to put them into practice every day. Our management continually reviews and updates the way we care for our environment and our people.





New product design and development is always a crucial factor in the survival of NGM Blocks. In the concrete precast industry that is changing very fast, NGM Blocks continually revise its design and range of products.

This is always necessary due to the fierce competition and the evolving preferences of consumers. A marketing investigation system is driven by the marketing team that puts the customer needs first and produces goods that are known to sell.

A market research is always carried out, which establishes the needs of consumers and the potential niche market of the new product. The development is always technology driven, Research and Development Team is directed toward developing products to meet the unmet needs.

NGM Blocks Research and Development teams was founded in 2016, with the aim of bridging the gap between research and practice in sustainable product development in the company. The team activities include advancing scientific knowledge, disseminating research findings, advocating policies and conducting training.

In near future additional lines - NGM Blocks research and development team is working on the soon production of concrete pre-stressed lintels, advanced retaining wall blocks, hollow core slabs and an advanced ready-mix concrete plant.



NGM Blocks head office and factory are based in the industrial area of  
Anfeh, Sea Side Road, Koura, North of Lebanon, Lebanon



+961 06 543 988



+961 76 710 510



+961 76 710 610



+961 06 543 988



info@ngmblocks.com



www.ngmblocks.com



ngmblocks



ngmblocks